



Request for Proposal
Architectural and Engineering Services
Arcadia High School CTE/Aquatic Center &
Future Capital Improvement Projects

FLEWELLING & MOODY
architects for education

Pasadena
626.449.6787

Lancaster
661.949.0777

www.flewelling-moody.com

An Employee Owned Corporation

ARCADIA UNIFIED SCHOOL DISTRICT

"...the integrity of your staff is one of the many qualities my administration and Board have valued over the years."

Janette Crawford
Eastside Union School District

Dr. Diana G. Van Hook
UNIVERSITY
CENTER
COLLEGE OF THE CANYONS

Dedicated to
Quality

Table of Contents

- 1** Table of Contents
- 2** Letter of Interest
- 3** Flewelling & Moody Firm Information
- 4** Client References
- 5** Experiences with Site-Based Planning Groups
- 6** Similar Projects
 - Completed Projects
 - Project Delivery Experience
 - Additions to Existing Campuses
 - Perspective on Challenges
- 7** Proposed Project Team
- 8** Arcadia High School Proposal
- 9** Litigation History
- 10** Additional Information



Respected Legacy



"For more than 50 years, Wiseburn has asked Flewelling & Moody for their professional services. This time line of exceptional services to our school district, says it all."

Bill Denny
Wiseburn School District

FLEWELLING & MOODY

July 14, 2011

Founded 1928
80+ years of continuous service

Attn: Christina Aragon
Assistant Superintendent of Business
Arcadia Unified School District
234 Campus Drive
Arcadia, California 91007

ORGANIZATION

*Flewelling & Moody is a
California Corporation.*

RE: Arcadia USD wants Exceptional Architectural & Engineering Services for
it's Arcadia High School Project

Dear Ms. Aragon:

OFFICE LOCATIONS

Pasadena Headquarters
141 South Lake Avenue
Second Floor
Pasadena, California 91101
tel: 626.449.6787
fax: 626.449.6477

Building a quality relationship leads to exceptional results. Since 1928, our clients have benefited from their relationship with us, and now we want to create the opportunity to benefit the Arcadia Unified School District. During the jobwalk, we heard Mr. Leahy note that Arcadia Unified School District is a demanding client - we like that! It shows that the District knows what it wants and that you truly care - we want to work with you!

Here is what we bring to this partnership:

Antelope Valley Office
1035 West Lancaster Boulevard
Lancaster, California 93534
tel: 661.949.0771
fax: 661.949.2843

- Knowledge and Expertise: We have successfully completed over 1,500 K-12 projects in our 83 year history. Our well-seasoned education-focused staff has strong, positive relationships with DSA, OPSC and CDE. Our CTE and High School Recreational project experience along with our other previous healthcare projects will be a real asset to this project.

- Teamplayers: A 'can do' attitude is the reason many of our district partnerships have lasted 10, 20, 30, even 60 years of continuous service.

www.flewelling-moody.com

- Reliability: We approach each project with an eye to maximizing value (also known as "the most bang for the buck") while providing innovative and inspiring educational environments. We are there to support your District.

FEDERAL ID NO.
95-4853344

In the pages that follow, you will see more about our capabilities, view some interesting examples of our work and read our clients' feedback which continues to be a source of pride and impetus to change when needed. We are pleased to bring added value, cost effective and creative solutions and a great partnership approach to Arcadia Unified School District.


Let's make exceptional learning environments together!

Sincerely,
FLEWELLING & MOODY



Scott Gaudineer, AIA
President and Managing Principal



A photograph of a modern school library interior. The space is characterized by bright yellow structural columns and beams that support a high ceiling with large windows. Two prominent pillars are constructed from red brick. The lower level features blue bookshelves filled with books. The lighting is a mix of natural light from the windows and modern, cylindrical pendant lights. The overall atmosphere is bright, open, and functional.

"You listened carefully to our suggestions, and the renderings reflected our wishes. Our questions were answered, and we were continually provided with expert advice throughout the process."

Helen Bell
Wiseburn School District

Responsive Design

SERVICES

MASTER PLANNING
FACILITIES ASSESSMENT
SCHEMATIC DESIGN
DESIGN DEVELOPMENT
CONSTRUCTION DOCUMENTS
CONSTRUCTION ADMINISTRATION
CIVIL ENGINEERING
STRUCTURAL ENGINEERING
MECHANICAL ENGINEERING
ELECTRICAL ENGINEERING
LANDSCAPE ARCHITECTURE &
IRRIGATION

LEED / CHPS ANALYSIS
TECHNOLOGY ENGINEERING
PROGRAMMING
INTERIOR DESIGN
PROGRAM MANAGEMENT
BOND ASSISTANCE
FUNDING ANALYSIS
CASH-FLOW ANALYSIS
PRE-BID QUALIFICATION
PUBLIC RELATIONS
GRAPHIC DESIGN

Description of Firm

Flewelling & Moody is a California corporation. The officers of the corporation are Scott Gaudineer, Ara Zenobians, James Moreto and Matthew Buchanan.

Locations

Flewelling & Moody -
Firm Headquarters
141 South Lake Avenue, 2nd Floor
Pasadena, CA 91101
tel: 626.449.6787
fax: 626.449.6477
fm-pasadena@flewelling-moody.com
Contact: Scott Gaudineer, AIA

1035 West Lancaster Blvd
Lancaster, CA 93534
tel: 661.949.0771
fax: 661.949.2843

www.flewelling-moody.com

CREDENTIALS

Flewelling & Moody has been an acknowledged leader in K-12 educational facility planning and construction for 83 years. Each day an average of over 500,000 California students attend schools designed by Flewelling & Moody. Many of these 1,500+ schools stand out for their creative, practical, technological approach to educational facility design.

To date Flewelling & Moody has completed approximately 50 new high schools, 175 middle schools, 500 elementary schools, and numerous additions. We have 30 years of experience with interim and permanent modular classroom projects and have also modernized some 150 schools over the last 25 years.

We are dedicated to achieving and maintaining high project standards - we are therefore selective about the districts that we choose to work with. We seek to establish relationships from which we and a district can benefit over many years. Several of our clients have worked with the firm for 20, 40, even 60+ years, testimony to the quality of client service we provide.



"[Your] design work for that new building was sensitive to the school's needs and produced a structure that fits seamlessly into the center of our campus... technically sound, aesthetically beautiful, and functionally ideal for our students needs."

Peter H. Bachman
Flintridge Preparatory School



Sensitive to
Context

References

Flewelling & Moody is a service oriented firm. Our long-standing relationships are reflective of our continuing commitment to our clients.

The following is a partial list of Flewelling & Moody's educational clients. Many of our relationships go back some 20, 40, even 60+ years!

Acton-Aqua Dulce Unified School District	Since 1985
Antelope Valley Union High School District	Since 1995
Bakersfield City School District	Since 2001
Burbank Unified School District	Since 1995
Claremont Unified School District	Since 1998
Conejo Valley Unified School District	Since 1964
Eastside Union School District	Since 1958
El Rancho Unified School District	Since 1995
Flintridge Preparatory School	Since 1981
Gilroy Unified School District	Since 1997
Keppel Union School District	Since 1954
Lancaster School District	Since 1965
Long Beach Unified School District	Since 1986
Manhattan Beach Unified School District	Since 1997
Montebello Unified School District	Since 2005
Oxnard Union High School District	Since 1999
Palm Springs Unified School District	Since 2001
Riverside Unified School District	Since 1992
Redondo Beach Unified School District	Since 2000
Rosemead School District	Since 2000
Sacramento Unified School District	Since 2000
San Lorenzo Unified School District	Since 2000
Southern Kern Unified School District	Since 1984
Taft City School District	Since 2002
Westside Union School District	Since 1958
Wisburn School District	Since 1945
Whittier Union High School District	Since 1995
William S. Hart Union High School District	Since 2004
Wilsona School District	Since 1955

WILLIAM S. HART UNION HIGH SCHOOL DISTRICT

Paul Rivas, Director of Facilities Modernization
21515 Centre Pointe Parkway
Santa Clarita, CA 91350
661.753.5740



PROJECT: WILLIAM S. HART HIGH SCHOOL
MODERNIZATION AND BAND ROOM ADDITION
Completed: August 2010
Cost of Construction: \$9,161,800

NEW MODULAR SCIENCE BUILDING
Completed: February 2010
Cost of Construction: \$4,978,868

OXNARD UNION HIGH SCHOOL DISTRICT

Stephen McFarland, Director, Maintenance and Operations
309 South "K" Street
Oxnard, CA 93030-5212
805.385.2516



PROJECT: CHANNEL ISLANDS HIGH SCHOOL
MODERNIZATION
Completed: September 2006
Cost of Construction: \$9,078,732

AUTO TECH CTE
Currently under construction
Cost of Construction: \$2,300,000

PALM SPRINGS UNIFIED SCHOOL DISTRICT

Joel Sorensen, Construction Coordinator, Facilities Planning & Services
980 East Tahquitz Canyon Way
Palm Springs, CA 92262-0119
760.416.6000



PROJECT: NELLIE N. COFFMAN MIDDLE SCHOOL
NEW ADMINISTRATION BUILDING AND MODERNIZATION
Completed: September 2007
Cost of Construction: \$7,394,249

PROJECT: JULIUS CORSINI ELEMENTARY SCHOOL
NEW 2-STORY MODULAR CLASSROOM BUILDING
Completed: August 2008
Cost of Construction: \$2,910,758

PROJECT: CABOT YERXA ELEMENTARY SCHOOL
NEW CONSTRUCTION
Completed: August 2009
Cost of Construction: \$27,320,000



WISEBURN SCHOOL DISTRICT

Tom Cox, Assistant Superintendent, Business Services
13530 Aviation Boulevard
Hawthorne, CA 90250
310.643.3009

PROJECT: R. HENRY DANA MIDDLE SCHOOL
NEW CONSTRUCTION
Completed: August 2007
Cost of Construction: \$30,014,703

PROJECT: CABRILLO ELEMENTARY SCHOOL
NEW CONSTRUCTION
Completed: January 2009
Cost of Construction: \$21,180,363



WHITTIER UNION HIGH SCHOOL DISTRICT

John Snider, Director of Facilities
9401 South Painter Avenue
Whittier, CA 90605-2729
562.698.8121

PROJECT: SANTA FE HIGH SCHOOL
MODERNIZATION
Completed: July 2008
Cost of Construction: \$6,224,981



309 South K Street • Oxnard, California 93030 • (805) 385-2527 • FAX (805) 247-9001

July 13, 2011

Board of Trustees

SOCORRO LÓPEZ HANSON
President

DICK JÁQUEZ
Vice President

WAYNE EDMONDS
Clerk

JOHN ALAMILLO
Member

STEVE W. STOCKS
Member

Administration

GARY DAVIS, Ed.D.
Interim Superintendent

WILLIAM E. DABBS, JR.
Assistant Superintendent
Educational Services

ROBERT "ROCKY" VALLES, Ed.D.
Assistant Superintendent
Human Resources

RANDY WINTON
Assistant Superintendent
Business Services

JENNIFER ZAVOIKO
Administrator
Student Services & Interventions

Visit our Website at
www.ouhsd.k12.ca.us

Oxnard Union High School District
Career and Technical Education Department
309 South K Street
Oxnard, CA 93030

To Whom It May Concern:

I am extremely happy to recommend to your attention Flewelling & Moody who specialize in architectural design for public schools and currently serve the Oxnard Union High school District (OUHSD) in this capacity. In my position as the Director of Career and Technical Education for OUHSD I have had the opportunity to work with Jim Moreto, Jeff Bissiri, and Rob Ettenger to redesign and modernize the Transportation/Automotive facility at Channel Islands High School.

While working on this project I have been very impressed with the enthusiasm, communication skills and professional demeanor of these individuals. Through all phases of the project, i.e., planning, designing and now construction they have put forth remarkable organizational skills and project support that have gone beyond my expectations. The close coordination and the inclusion of all effected OUHSD staff, including the instructor, have brought about architectural solutions that only an experienced firm could accomplish.

I can testify to the fact that Flewelling & Moody is extremely efficient in all matters dealing with the various phases of the project. They go beyond the call and nature the project to collaborate and articulate with our district administrators, the teachers and school site personnel.

I feel justified, therefore, on the basis of my experience in working with Flewelling & Moody to recommend them without reservation.

You may call upon me at your convenience if I may be of any further service to you in this matter.

Sincerely,

Phyllis Throckmorton
Director
Career and Technical Education

District of Scholars, Achievers, and Champions!

Adolfo Camarillo • Adult School • Channel Islands • Frontier • Hueneme • Oxnard • Pacifica • Rio Mesa



Hart High School

Wm. S. Hart Union High School District

Collyn J. Nielsen, Ed.D.
Principal

February 16, 2010

To Whom It May Concern:

I am writing this letter of recommendation in support of the architectural firm Flewelling & Moody in their pursuit of the Phase II modernization project at Hart High School. As principal at Hart, I have had the pleasure of working with Scott Gaudineer, Utar Pollard, and Mark Hulme as they have designed and guided us through our Phase I modernization project these last three years. Though any project of this size has its complications, the architects at Flewelling & Moody have done a tremendous job in working with and listening to our staff and delivering our beautiful buildings on time.

The architects at Flewelling & Moody have demonstrated many strengths throughout Phase I modernization. They have a very service-oriented approach to working with schools, and have been very communicative and responsive with all our staff from the very start. If we needed them to come to Hart to explain something or answer questions or just to listen to concerns, they came without complaint. They were always dependable, approachable, and consistent. They have also done an excellent job in meeting deadlines during both the design and construction phase, and have done their utmost to see that our Hart staff was able to move in to our new spaces on time. They have improved our learning environments through the incorporation of technology and green design by including in their plans upgraded projector and audio systems; the use of natural light in our science building; and using sustainable materials in the form of bamboo countertops, rubber flooring, and modular carpet tile.

I would recommend that Flewelling & Moody continue through Phase II modernization at Hart High School. They have certainly proved themselves more than capable throughout Phase I, and their presence would ensure a seamless continuity through the end of the project.

If you have any questions, please do not hesitate to call.

Sincerely,

Collyn J. Nielsen, Ed.D.



24825 N. Newhall Avenue - Newhall, California 91321
(661) 259-7575 - FAX (661) 254-6436



Wm. S. Hart Union
High School District



PALM SPRINGS UNIFIED SCHOOL DISTRICT

980 EAST TAHQUITZ CANYON WAY
PALM SPRINGS, CALIFORNIA 92262-0119
(760) 416-6000

LORRI S. McCUNE, Ed.D., Superintendent of Schools

BOARD OF EDUCATION: GARY JEANDRON, President – JUSTIN BLAKE, Clerk
RICHARD CLAPP, Member – MEREDY SHOENBERGER, Member – SHARI STEWART, Member

December 1, 2009

To Whom It May Concern:

We have had the pleasure of working with Flewelling & Moody since 2002 on a wide spectrum of projects throughout our District. It is very satisfying to work with a consistent set of team members from Flewelling & Moody since their first project with us.

Jim Moreto, AIA, principal-in-charge and Michael Stahlheber, AIA has guided and assisted our District in orchestrating numerous master planning, facilities assessment, full modernization projects, partial modernization projects, kindergarten additions, library additions, multiple two story modular classroom additions, kitchen remodels, multiple HVAC projects (from simple multi-zone unit replacement to an entire campus 4-pipe system / chiller addition), low voltage projects, new administration building, child care additions, miscellaneous site work and up to a brand new elementary school.

Their passion as dedicated school architects is clearly evidenced in their project approach, communication and process. Their commitment to meet project deadlines is indicative in our past completed projects. Their attention to details during planning, design and construction administration have impacted our projects to stay within our established project budgets. Their A/E team strives hard to fight for the District's interest during construction, to assist in controlling change orders as displayed in their interaction and active participation with the multiple prime contractors and the additional city requirements in our recently completed new elementary school.

Overall, we enjoy our working relationship with Flewelling & Moody and their team of engineers. I feel very comfortable in recommending their team to school districts with upcoming similar projects.

Sincerely,

Joel Sorensen
Construction Coordinator

JA:dd

OXNARD UNION HIGH SCHOOL DISTRICT

309 South "K" Street
Oxnard, CA 93030-5212
Phone (805) 385-2516 or 385-2518
FAX (805) 483-1619
email – Stephen.mcfarland@ouhsd.k12.ca.us

Stephen McFarland
Director of Maintenance/Operations

Jeanne E. Carter
MOT Clerk

December 1, 2009

To Whom It May Concern:

It is with great pleasure that I write this letter of recommendation for Flewelling & Moody. Our District has successfully completed multiple projects with Flewelling & Moody under the leadership of James Moreto, AIA, one of the firm's principals. We have worked with them since the year 1999. Jim and his staff of dedicated and experienced professionals have guided and served the District in facility assessments, planning, programming, design and construction administration.

We have successfully completed the modernization of Hueneme High School and Channel Islands High School with Flewelling & Moody. We have since then, worked on miscellaneous other projects. Currently, we are working on the remodeling and expansion of one of our food services facility and an addition to the campus of Channel Islands High School to house the new Auto Career Tech Education program.

Flewelling & Moody's approach to planning and design is very systematic. The design is functional and at the same time sensitive to the existing conditions in the campus. Our interaction and communication with Jim and his team have always been one that is seamless with respect to their availability, meeting project deadlines, resources to highly trained staff of architects and engineers, ability as an efficient problem solver and as a reliable liaison between the contractor and our District. Their long time experience with OPSC and CDE, have provided us the opportunity to position our District to take advantage of state funding sources for our District projects. Their deep knowledge of DSA policies and procedures has been instrumental in guiding and representing the District during project construction periods. I am pleased to recommend Flewelling & Moody to any District that is looking for a team of very capable professionals.

Sincerely,



Stephen McFarland
Director Maintenance & Operations



3500 Douglas Avenue
Mojave, CA 93501

Voice: (661) 824-4001
Fax: (661) 824-2686

February 5, 2010

TO WHOM IT MAY CONCERN:

Flewelling & Moody Architects have been working with the Mojave Unified School District since 2000. They have been our architects for all of our projects, including four modernization projects, a new high school and new elementary school. They have adjusted often to address our request for energy effectiveness and have worked with us to have affordable buildings. Hacienda Elementary School and California City High School are our two new schools.

Modernizations have included a high school and elementary schools. Included were major demolition, plumbing and electrical, and major interior and exterior renovations. Our community has been most impressed with the work completed and supported our district in additional projects.

Street paving, gymnasiums, libraries, multi-purpose rooms, stages, and roofing have all been part of these projects. There is not much to identify that has not been part of a modernization project or a new construction project that Flewelling & Moody has handled. Our oldest school was originally built in the 1930s and has required some special attention. Flewelling & Moody has done an excellent job.

Our primary Architect and contact has been Matt Buchanan. Matt has always been quick to respond to any request and has worked with us since the beginning of all these projects. Matt has worked with numerous groups of people through our projects and is well respected by all.

I am happy to recommend Flewelling & Moody Architects.

Sincerely,

A handwritten signature in blue ink, appearing to read "L. Phelps".

Larry Phelps

District Superintendent

Graduating Students with Technical, Reasoning, Academic and Character Skills



"Your talent took a sprawling hodge-podge and created a unified learning community. The functionality of the classrooms is outstanding."

Cheryl K. James
Palm Springs Unified School District

Functional Form



Experience with Site Based Planning Groups

Palm Spring Unified School District Corsini Elementary School

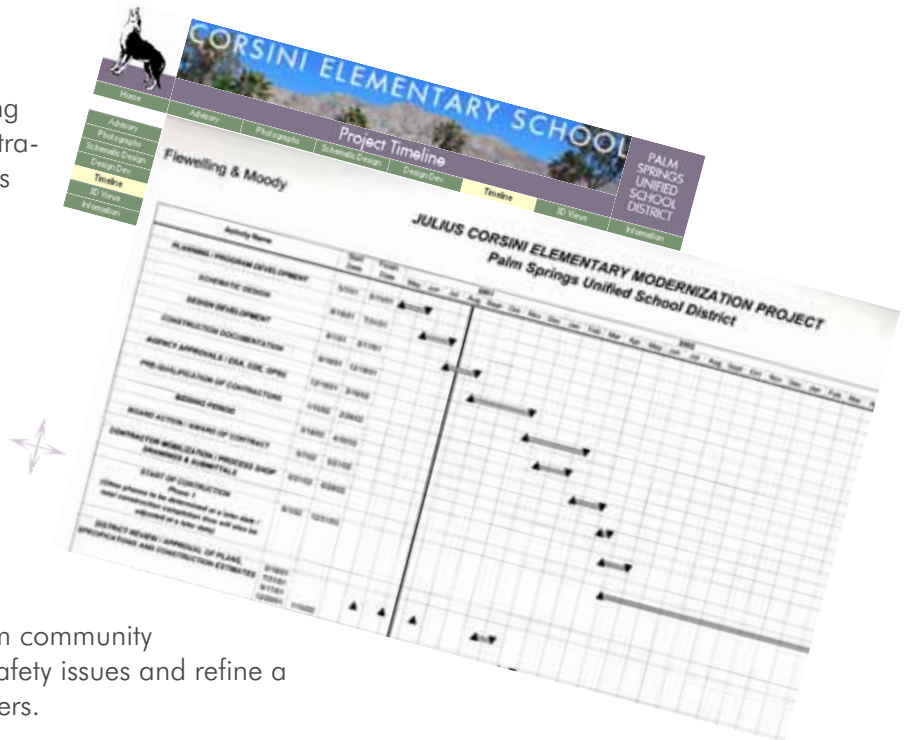
Flewelling & Moody is proud of our reputation as a service-oriented firm. We understand the importance of community outreach and sharing project information with all stakeholders, not only to achieve transparency throughout the process, but to also encourage input, tease out issues and concerns, and in the end produce a successful learning environment. We like to partner closely with our district representatives to understand and manage expectations through our interaction with many site advisory committees or site-based planning groups.

At Palm Springs Unified's Corsini Elementary School Modernization, Flewelling & Moody's design team formed a site-based planning group to discuss and exchange ideas for the reconfiguration and redesign of the entire campus. The group was asked to address existing on- and off-site safety concerns, vehicular and pedestrian circulation, replacement of all classroom buildings, redesign of hard courts and playfield areas, and to mitigate the lack of school



community spirit. The site-based planning group was composed of district administration, maintenance & operations, facilities planning, site administration, selected faculty, volunteers and parents from the community.

To document the entire process, timelines, design options and meeting minutes were all made available at website specific to the project. This allowed students, staff, district administration, site administration and the community to access the information and track progress. This method allowed us to effectively solicit input from community members, identify and address off-site safety issues and refine a design solution acceptable to all end users.



El Rancho Unified School District Modernization Projects

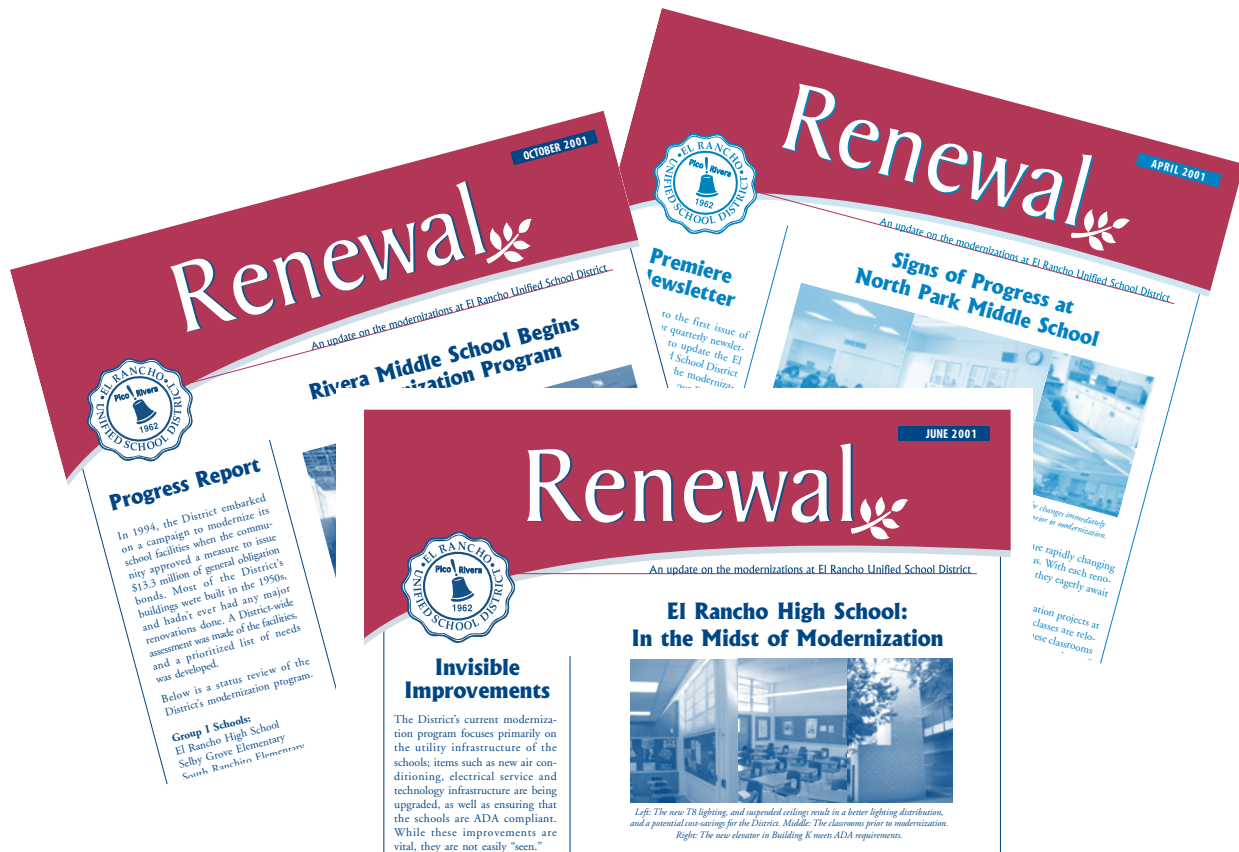
The planning and execution of multiple modernization projects with El Rancho Unified School District presented several challenges. Each school had its own site advisory committee with community representatives, site administration and district administration. Managing the district-wide scope of work uniformly and equitably while addressing site specific needs and sticking to project budgets and timelines were all key issues for the district. Flewelling & Moody developed a planning template to organize and prioritize the scope of work.

The district’s concern was to maintain transparency for all scheduled work at each site: communicating with the community in an effective manner became a key concern. Flewelling & Moody assisted the district by participating in and providing content for their quarterly district-wide newsletters. Along with the district administration, we master-planned the release of a series of articles that informed the community about the general plan for each school site.

Samples of information shared in the articles pertained to:

- The schedule of construction/ phasing specific to each school.
- The scope of work for each site.
- Updates on the progress of construction activities at each school.
- Why some schools and projects are of higher priority than other schools.
- Explanation of the different funding mechanisms for each project: the district's local bonds and funds generated from OPSC.

The quarterly newsletters also had a mail-in survey postcard designed for community members to ask questions about any of the district-wide improvements. This allowed for open communication between the district and the community members. District staff members have since noted that this transparency led to the passage of two other local bond measures and additional projects completed successfully.



"It is very satisfying to work with a consistent set of team members from Flewelling & Moody since their first project with us."

Joel Sorensen
Palm Springs Unified School District

Team Approach



Similar Projects

Flewelling & Moody has a history with Regional Occupational Program (ROP) projects that have many similarities with Career Technology Education. Our design of the Francisco Bravo Medical Magnet school provided one of two medical magnet schools in the Los Angeles Unified School District. Our additional medical experience in multiple Kaiser Permanente projects and at the University of Southern California Medical Campus will benefit the sports medicine program for the proposed CTE / Aquatic Center at Arcadia High School.



Our most recent CTE project at Oxnard Union High School District is currently under construction. One of the major design goals was to create a sustainable building using the Collaborative for High Performance Schools' (CHPS) design criteria as a framework for the decision making process.

Working closely with the district's Director of Maintenance and Operations, the CTE Program Director and the Auto Technology Instructor from the beginning of the design process, we were able to create a flexible, technologically advanced instructional space that is deeply focused on sustainability. We employed several passive and active strategies, the most important being our adaptive reuse of the existing Auto Shop building. By salvaging the existing walls, roof structure and auto service bays, we cut down on demolition waste while reducing the amount of new building materials required. In addition to this reuse strategy we have incorporated in many sustainable features:

- New tubular skylights allow natural lighting throughout the building



- North clerestory windows provide natural daylighting
- Energy efficient light fixtures with photocell sensors. Dim light fixtures when sufficient daylight is available.
- New cool roof reduces heat gain in the building
- Roof rainwater collection system is tied to the existing site irrigation system as a water saving measure
- Increased building insulation throughout old and new portion reduces cooling demand

As well as being chosen for their environmental footprint, the building materials selected need to be extremely durable to support Auto Technology instruction through the buildings many years of use. Concrete block and stainless steel cladding are used throughout the interior of the classroom and auto repair spaces. Storefront glazing is provided in the classroom walls to allow for visual transparency throughout the building, giving the instructors better safety and oversight capability. We and the district anticipate a highly successful addition to the Channel Island High School Campus.

Anticipated Project Delivery Methodology

Flewelling & Moody has many years of experience with various project delivery methods, with a variety of highly successful and sometimes challenging outcomes. The analysis and recommendations below identify the benefits and challenges of three main delivery methods, any of which may be appropriate for the project.

Design-Bid-Build

In this traditional three stage method the project owner retains an architect to produce complete design documents that a general contractor will then use to prepare bid pricing. The approach is familiar and well-understood by both clients and contractors and usually results in a competitive initial cost. As the architect represents and works directly for the owner, this method offers you a high degree of control over project finishes and quality.





We attribute the success of our “Design-Bid-Build” projects to experience: our clients’ familiarity with the DSA process and the general contractor’s experience in working on school projects with DSA approved drawings. Probably the lack of experience is the biggest challenge: By law the job must be awarded to the lowest responsive and responsible bidder, yet there are instances when that contractor demonstrates he does not have sufficient experience. Successful contractors will establish good working relationships with their subcontractors, but in a low bid environment, subcontractor experience is too often lacking, especially in lean economic times like these.

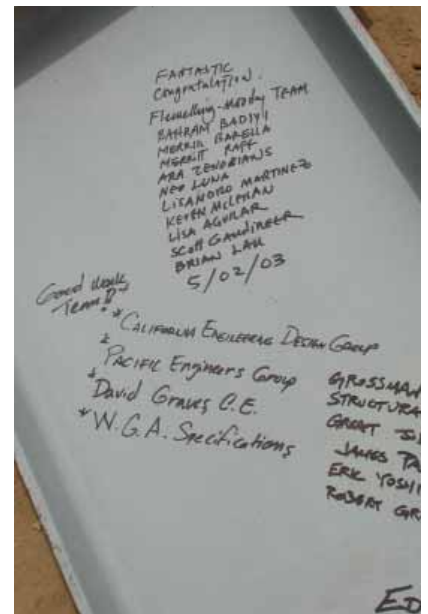
Other challenges faced when using Design-Bid-Build can include increased costs due to change orders as well as potentially adversarial relationships between owner and contractor due to differing goals and expectations. Any un-

clear scope items in the contract documents are a potential source of conflict and additional cost. Even the time-consuming process of pre-qualification can result in unfavorable results, resulting to construction delay and additional cost.

While we are experienced and fully capable of managing construction through this traditional project delivery method, we have found that other project delivery methods can produce better results.

Construction Manager / Multiple-Prime

Using qualifications-based selection, the district selects a third-party Construction Management (CM) entity to provide on-site services to manage multiple prime contractors, individual trade contractors that each contract directly with the district. The district assumes some of the role and risk of a general contractor (GC) in this delivery method. The CM manages the execution of all multi-prime contracts and is also responsible to delineate the trades



and scope involved in each contractor's bid package.

The multi-prime delivery method can offer an owner somewhat more control than the traditional Design-Bid-Build: as the owner has direct access to each trade contractor, issues and questions are less likely to be obscured than when interpreted through a GC. The district can bid portions of the work flexibly, or by phase, giving more control over project schedule. It is simpler to and also rebid individual trade packages without delay if a bid comes in higher than expected.

Some cost savings have traditionally been expected by avoiding the General Contractor's mark up, but in recent years most trade contractors have realized that they can raise prices to compensate for the lack of a GC pocketing the difference themselves. Any potential savings that remain may be offset by CM fees. This project delivery method often results in a higher total project cost. Many districts also dislike the degree of uncertainty, as the total construction cost will not be known until the last bid package is approved by the board.

There are additional challenges when using this method: bid packages for multi-prime contractors need to comply with public works low bid process, which does not always result in the selection of the most skilled contractor. If the CM is inexperienced, scope gaps between bid packages can easily occur, resulting in additional cost for unbid work. If the CM is not familiar with DSA reporting and paperwork requirements, the CM's boilerplate documentation efforts can cause confusion during construction and inspection. Multiple direct contracts also greatly increase the paperwork required by DSA - the team must keep separate paperwork for each contract. DSA also now includes the CM fee as a part of the project cost, which can result in higher DSA overall fees for the District.

Flewelling & Moody has been involved with many CM/Multi-Prime projects, and has worked closely with several well-respected CM entities. Most of these projects have been very successful. Where we have seen challenges, the most common have been with non-performing multi-prime contractors and inexperienced CM agents. Should the district select this delivery method, we recommend a contractor & CM pre-qualification process with stringent evaluation & selection criteria.



Lease-Lease Back

In our experience, those districts that have used the Lease-Lease-Back delivery method have been highly successful. This method allows the district to participate in the selection of a single Developer-Contractor entity at an early stage. The district has the opportunity to interact with individual trade contractors and suppliers in an open dialogue to layout a realistic schedule, define goals and priorities, as well as consider contractor's value-engineering and other suggestions that might improve the overall project outcome and stay within budget.

When the scope is clearly defined, the Developer-Contractor sets a guaranteed maximum price early in the project. Once construction cost and schedule are agreed upon, there is then less need for district involvement in the day-to-day process. A guaranteed price can provide more solid projected costs than other methods, allowing the district to structure monthly expenses during construction. This delivery method also provides the advantage of financing the project over time, easing large obligations which can impact cashflow.

While this delivery method can remove some supervisory burden from the district, the financing options can be somewhat complicated, and the process is not guaranteed to be free of change orders. For example, discovery of unforeseen subterranean conditions or additional hazardous materials might impact the construction's critical path, causing delay and justifiable additional construction cost. It is good practice to assign a project allowance for unknown site conditions such as these.



We also strongly recommend that the district rigorously pre-qualify the Developer-Contractor: qualifications and experience are needed to successfully execute this process.

While we are confident that any of these three delivery methods can result in a highly successful project, Flewelling & Moody recommends the lease-lease back option. It can offer satisfying end results within the anticipated budget without many of the surprises one might encounter with the other delivery methods.

Additions to Existing Campuses

Wiseburn School District

Burnett Elementary School
New Classroom Building Addition

The Burnett Elementary School Addition provided a new 7,000 square foot classroom building to complement the existing campus built in the late 1940's. Flewelling & Moody worked with the local community, teachers and school staff to define the goals of the project: new construction should be designed to blend with the well established architectural style of the existing campus but respond to the modern needs of the students. The new building defers to the predominant architectural style of the campus but provides a dynamic twist to the traditional classroom wings spread across the campus by carving out intimate exterior meeting areas. From the street the building closely resembles the other buildings on the campus but from the interior of the campus the redefinition of exterior spaces provides a completely different experience that has brought new life to an old campus.



Flintridge Preparatory High School

New Library & Media Center Addition

A client of over 40 years, the school was founded in 1933 and houses an eclectic collection of buildings on a very small site in the heart of La Canada Flintridge. Flewelling & Moody was asked to design a new Library and Media Center for this compact campus. Aside from addressing the specific programmatic needs, there were several major challenges associated with this project: the new building had to be placed on the only available vacant site, closely surrounded by several buildings; a new point of entry for the campus was needed, and the new infill complex had to unify the architectural character of the existing buildings.



A crescent-shaped colonnade now surrounds an inviting courtyard and connects the new building with the existing fabric. The courtyard serves as the new site entry and has become the heart of the campus: the deep walkway and graceful

arches define the circulation between the buildings while providing refuge from the sun and offering a place for the students to gather.

Palm Springs Unified School District

Nellie Coffman Middle School
New Administration Building Addition

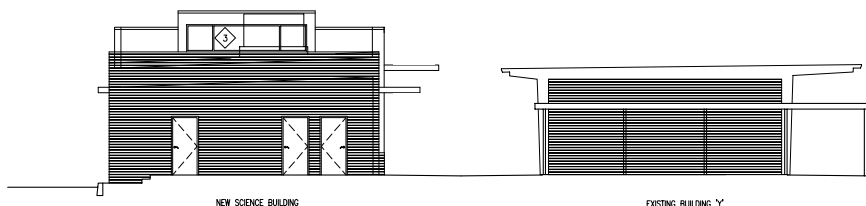
The school board requested a new building that would blend into the scale and pattern of the existing site. The original exterior design of the buildings to remain involved a series of metal panels that had not held up to the everyday use and abuse of middle school students. The building facades were reworked using much more resilient colored glazed brick, a site wide face-lift that brought the existing buildings up to the standard of the new addition.

Whittier Union High School District

Santa Fe High School
New Science Building Addition

The new science building addition respects the architectural characteristics and vernacular of the late 1950's campus by utilizing similar brick veneer detailing to match the existing buildings and stucco to match the existing concrete surfaces. A courtyard was created between the new and the old that reflects

the overall campus site design. While the exterior emulates and continues the older campus feel, the building's interior features energy efficient design, modern construction and technology.



NORTH ELEVATION

SCALE : 1/8" = 1'-0"

DATE: 10/10/11
BY: [illegible]

3

A300

Flewelling & Moody's Perspective on Challenges

In our experience, additions to existing campuses can present the following challenges - here is how we have met them:

- Discovery of unanticipated underground utilities and easements within the footprint of the subject project.

Solution: If the District doesn't have accurate up-to-date as-built drawings, we suggest an x-ray underground survey prior to bid.

- Soils and Geologic conditions that might require a more involved foundation system in lieu of conventional spread / pad footings.

Solution: An allowance can be included in the bid documents as a contingency to accommodate these kinds of circumstances.

- Noise-generating construction activities that can interfere with the day to day school instruction or scheduled testing.

Solution: Maintaining close contact with site staff as construction proceeds allows us to coordinate and schedule these activities.

- The impact of construction to the students/staff circulation and safety throughout the campus.

Solution: We take care to lay out site fencing plans in the bid documents so the contractor and site staff understand potential impacts prior to the start of construction.

- On- and off-site access and parking of all construction related heavy equipment construction personnel and staging areas.

Solution: We delineate staging areas and access points in the plans so the contractor knows what to expect.

- Construction refuse and dust control.

Solution: We seek to provide clear specifications that list District expectations for jobsite decorum and daily cleanup - a tidy jobsite is safer and less of an impact to the community.

- Coordination of construction phasing with the district, school administration and staff.

Solution: We find that when the specs spell out interim milestones and indicate liquidated damage penalties for missing any anticipated phase completion date, the contractor has a strong incentive to meet expected deadlines.

We enjoy the challenges that design and construction bring our way. There are few things more satisfying than the thanks you get from a teacher or a student whose school and learning you have been able to improve.

"a very service-oriented approach to working with schools... very communicative and responsive with all our staff from the very start."

Collyn J. Nielsen
William S. Hart Union High School District



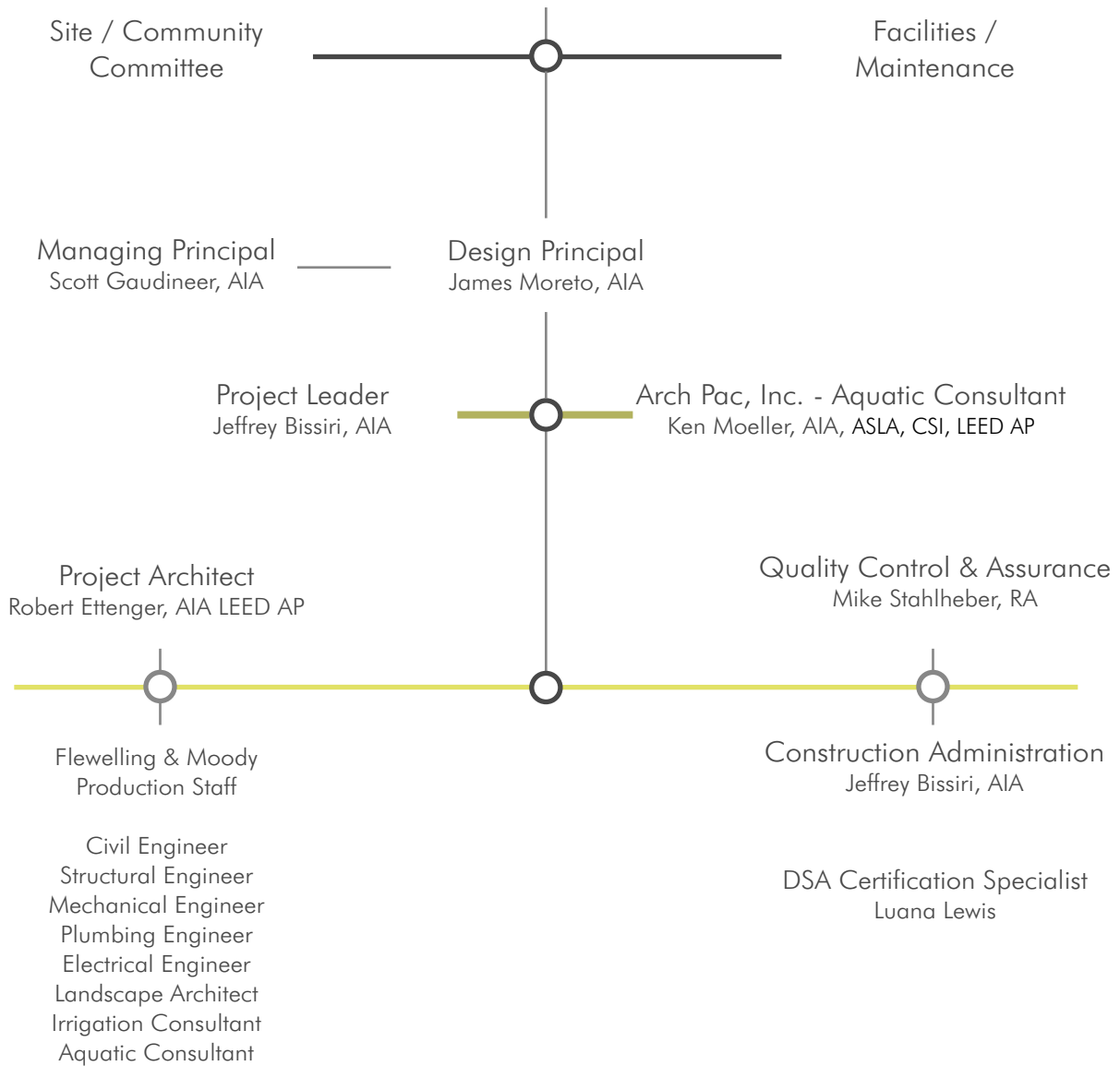
Service Focus

Firm personnel & staff resources

Flewelling & Moody's current staff of 39 includes 15 registered architects shared between our Pasadena and Lancaster offices. Our experienced staff offers architectural, engineering, planning and interior design services. The high ratio of licensed architects to production staff provides for significant reduction in errors and ambiguities.

PROPOSED TEAM

Arcadia Unified School District



Workload

At Flewelling & Moody, we believe that partnering with our district clients and their representatives early on in the process is critical to the successful delivery of the project.

We therefore take the team structure shown in our organizational chart seriously. We know that our clients expect continuity with our team from project programming to project occupancy. Our best district clients are demanding and they expect to work with the same individuals: the team that starts the project also finishes it - we make this a standard practice with all Flewelling & Moody projects. We believe this consistency is one of the main reasons for our continuing businesses with many of our clients.

After a review of our current workload, Flewelling & Moody is prepared to assign a solid team to serve your project's needs and make a commitment to the district per your anticipated project delivery schedule: August 2011 through September 2014.

Our A/E team's local Pasadena presence and our firm's close proximity to your district allows our entire team to respond/attend to your project needs even on short notice. The team we propose is comprised of our architects with the most recent CTE experience at Channel Island High School, currently under construction.



Scott F. Gaudineer, AIA President / Managing Principal

Flewelling & Moody Architects

141 South Lake Avenue, 2nd Fl.
Pasadena, CA 91101
tel: 626.449.6787
fax: 626.449.6477

Education

1979 California Polytechnic
University,
San Luis Obispo, CA
Bachelor of Science

1980 Bachelor of Architecture
with Honors

Registration and Affiliations

Registered Professional Architect
California Registration
#C 14211

American Institute of Architects

Construction Specifications
Institute

Trustee, Oralingua School for the
Hearing Impaired

Platinum Member, SSSA

Member of CASH since 1983

Member of CEFPI since 1990

Regent for the California
Architectural Foundation

With Flewelling & Moody since
1980

Mr. Gaudineer serves as the chief strategist and futurist for many of our educational clients. His pre-bond experience and effective presentations to community forums and private organizations have resulted in the passing of more than \$500 million in bond measure funds. He is often called in to assist clients in defining a 21st century vision for outstanding facilities that support educational excellence.

Directing work at the front-end of projects, he defines budgets, examines needs, prioritizes goals, and outlines public relations efforts to weave the client's vision into the project design. In 2009, Scott was named Chairman of the DSA Advisory Board, committed to strengthening the relationships between DSA and School Districts. In 2010, he was selected to serve on the Department of General Services Expert Work Group to assist in the State's on-going efforts to streamline the delivery of schools. Scott has designed or overseen some 250+ projects in his years with the firm.

Selected Recent Project Experience as Principal in Charge - Flewelling & Moody

<u>William S. Hart Union High School District, Newhall, CA</u>	2007 - Present
• Hart High School - Modernization / New Construction	
<u>Bakersfield Unified School District, Bakersfield, CA</u>	2004 - Present
• Compton Middle School - Modernization	
• Pauley Elementary School - Modernization	
• Evergreen Elementary School - Modernization	
<u>Taft City School District, Taft, CA</u>	2005 - Present
• Lincoln Junior High School - Modernization	
• Conley Elementary School - Modernization	
<u>Southern Kern Unified School District, Rosamond, CA</u>	1985 - Present
• Rosamond High School - Modernization	
• Rosamond Elementary School - Modernization	
• Hamilton Elementary School - Modernization	
• Tropico Middle School - Modernization and New Construction	
<u>Wiseburn School District, Hawthorne, CA</u>	1985 - Present
• Peter Burnett School - Addition	
• Juan De Anza - New Construction	

James R. Moreto, AIA **Principal / Vice President**

Flewelling & Moody Architects

141 South Lake Avenue, 2nd Fl.
Pasadena, CA 91101
tel: 626.449.6787
fax: 626.449.6477

Education

1985 Louisiana State University,
Baton Rouge, LA
Bachelor of Architecture

Registration and Affiliations

Registered Professional Architect
California Registration
#C 22384

American Institute of Architects

With Flewelling & Moody since
1987

Mr. Moreto is a licensed architect with many years of professional experience designing both K-12 educational facilities and community college projects. In his history with the firm, Mr. Moreto has managed new school campuses, school modernizations, campus additions/reconstruction, infrastructure upgrades, master planning, programming and facilities assessment projects. His sensitivity to both school and community needs has provided him the opportunity to be involved in several community outreach programs. His focus on enhancing relationships between the District and the community leads to projects that successfully meet stakeholders's expectations.

Selected Project Experience - Flewelling & Moody

Whittier Union High School District, Whittier, CA 2010 - Present

- Pioneer High School - Stadium & Athletic Fields Master Plan & Replacement
- Santa Fe High School - Athletic Fields Master Planning & Replacement
- Multiple High School - Modernization Projects

Palm Springs Unified School District, Palm Springs, CA 2003 - Present

- Cabot Yerxa Elementary School - New School Campus
- Nellie Coffman Middle School - Modernization/New Administration Bldg. Addition
- Julius Corsini Elementary School - Campus Reconfiguration/Addition/Modernization
- Multiple School Sites - Infrastructure Upgrades

Oxnard Union High School District, Oxnard, CA 2002 - Present

- Channel Islands High School CTE Auto Technology - under construction
- Channel Islands High School - Modernization
- Hueneme High School - Modernization

El Rancho Unified School District, Pico Rivera, CA 1997 - Present

- El Rancho High School - Modernization, Utility Upgrades
- Salazar Continuation High School - Modernization, Utility Upgrades
- Burke Middle School - Modernization, Utility Upgrades
- North Park Middle School - Modernization, Utility Upgrades
- Rivera Middle School - Modernization, Utility Upgrades
- Birney Elementary School - Modernization, Utility Upgrades

Claremont Unified School District, Claremont, CA 2004 - 2007

- Chapparral Elementary School
- Mountain View Elementary School
- Condit Elementary School
- Sumner Elementary School

Jeffrey A. Bissiri, AIA Project Architect

Flewelling & Moody Architects

141 South Lake Avenue, 2nd Fl.
Pasadena, CA 91101
tel: 626.449.6787
fax: 626.449.6477

Education

1982 California Polytechnic
University, Pomona
Pomona, CA
Bachelor of Architecture

Registration and Affiliations

Registered Professional Architect
California Registration
#C 17413
American Institute of Architects

Los Angeles Conservancy

Art Deco Society of Los Angeles

With Flewelling & Moody since
2001

Mr. Bissiri has more than 20 years of diverse experience performing a full range of responsibilities, from design development through construction administration. Jeff's expertise encompasses a wide variety of building and occupancy types, including CTE Auto Technology currently under construction. He offers clients strong skills in the production of working drawings, bid and construction administration, quality assurance and specification writing.

His extensive technical and construction administration background have given him the ability to skillfully assess issues such as value engineering, constructability and maintenance. Jeff prides himself on his superb communication skills: a good listener, he is also an excellent problem solver and negotiator.

Selected Project Experience - Flewelling & Moody

<u>Oxnard Union High School District, Oxnard, CA</u>	2009 - Present
• Channel Islands High School - CTE Auto Technology	
<u>Whittier Union High School District, Whittier, CA</u>	2011 - Present
• Sante Fe High School New Science Bldg. - Addition	
<u>Claremont Unified School District, Claremont, CA.</u>	2009 - 2010
• Chapparral Elementary School - Site Upgrades	
<u>No. Orange County Community College Dist., Orange County, CA.</u>	2003 - 2009
• Cypress College - New Construction	
• Fullerton College - New Construction	
<u>Palm Springs Unified School Dist., Palm Springs, CA</u>	2006 - 2007
• Vista Del Monte Elementary School - Modernization	
• Agua Caliente Elementary School - Modernization	
<u>Redondo Beach Unified School District, Redondo Beach, CA.</u>	2001 - 2004
• Redondo Union High School - New Construction & Utility Upgrades	

Robert L. Ettenger, AIA, LEED AP Project Architect

Flewelling & Moody Architects

141 South Lake Avenue, 2nd Fl.
Pasadena, CA 91101
tel: 626.449.6787
fax: 626.449.6477

Education

- 2001 California Polytechnic
University,
San Luis Obispo, CA
Bachelor of Architecture
- 2002 California Polytechnic
University,
San Luis Obispo, CA
Master of Business
Administration

Registration and Affiliations

Registered Professional Architect
California Registration
#C 31336

American Institute of Architects

LEED Accredited Professional

With Flewelling & Moody since
2005

Mr. Ettenger has been involved in several of the firm's master planning, modernization and new construction projects. He brings a positive attitude and collaborative work ethic to each project, facilitating a strong relationship between all parties. He is dedicated to client satisfaction and has an excellent ability to translate the client's program into a strong design that is both functionally and aesthetically pleasing.

He is keenly interested providing a design solution that responds sensitively to the context, improving its environment. As a LEED Accredited Professional he is always looking to incorporate environmentally responsible design solutions that will enhance the program working within the clients budget.

Selected Project Experience - Flewelling & Moody

Oxnard Union High School District, Oxnard, CA 2009 - Present

- Channel Island High School - CTE Auto Technology

William S. Hart Union High School District, Newhall, CA 2007 - Present

- Modernization of Bldgs C, E, F, J, K, M and R
- Campus wide Fire Alarm and Technology Infrastructure Upgrade
- Auditorium / Band Room Addition
- New 14,000 Sq. ft Modular Science Building

Palm Springs Unified School District, Palm Springs, CA 2006 - Present

- Julius Corsini Elementary School - Modernization / New Construction
- Cabot Yerxa Elementary School - New Construction
- Agua Caliente Elementary School - Modernization
- Vista Del Monte Elementary School - Modernization / New Const.
- Nellie Coffman Middle School - Modernization / New Construction

Conejo Valley Unified School District, Conejo, CA 2005 - 2006

- Sycamore Canyon Elementary School - New Construction

New Village Charter School, Los Angeles, CA 2006

- Campus Modernization

Whitter Union High School District, Whitter, CA 2005 - 2007

- California High School - Modernization
- Pioneer High School - New Construction
- Pioneer High School - Stadium and Athletic Fields Renovation

Michael Stahlheber, RA Project Architect

Flewelling & Moody Architects

141 South Lake Avenue, 2nd Fl.
Pasadena, CA 91101
tel: 626.449.6787
fax: 626.449.6477

Education

1979 California Polytechnic
University,
San Luis Obispo, CA
Bachelor of Science

Registration and Affiliations

Registered Professional Architect
California Registration
#C 14530

American Institute of Architects

With Flewelling & Moody since
1979

Mr. Stahlheber provides a broad and common-sense approach to architecture that emphasizes high functionality, constructability and sensitivity toward client needs. His 30 years of experience and consistent attention to detail have resulted in meeting short timelines, minimizing change orders, and implementing of cost-effective construction methods.

He is extremely effective in breaking down complex construction issues, and has worked on over 100 educational facility projects.

Selected Project Experience - Flewelling & Moody

- | | |
|---|----------------|
| <u>Whittier Union High School District, Whittier, CA</u> | 2002 - Present |
| <ul style="list-style-type: none">California High School - ModernizationPioneer High School - New Const. / Modernization / Master PlanningSanta Fe High School - New Const. / Modernization / Master Planning | |
| <u>Palm Springs Unified School District, Palm Springs, CA</u> | 2006 - Present |
| <ul style="list-style-type: none">Julius Corsini Elementary School - Modernization, New ConstructionCabot Yerxa Elementary School - New ConstructionNellie Coffman Middle School - New Construction / Modernization | |
| <u>Gilroy Unified School District, Gilroy, CA</u> | 2003 - Present |
| <ul style="list-style-type: none">Antonio Del Buono Elementary School - New Construction | |
| <u>Conejo Valley Unified School District, Conejo Valley, CA</u> | 1989 - 2002 |
| <ul style="list-style-type: none">Sycamore Canyon Elementary School & Middle SchoolLang Ranch Elementary SchoolRedwood Intermediate School - Modernization | |
| <u>Providence High School, Burbank, CA</u> | 2000 - 2002 |
| <ul style="list-style-type: none">Fritz B. Burns, Gymnasium - Addition | |
| <u>Los Angeles Unified School District, Los Angeles, CA</u> | 1991 |
| Francisco Bravo Medical Magnet High School - New Construction | |
| <u>Newhall School District, Newhall, CA</u> | 1994, 1998 |
| <ul style="list-style-type: none">Stevenson Ranch Elementary School - New ConstructionValencia Valley Elementary School - New Construction | |

Luana Lewis Project Closeout

Flewelling & Moody Architects

141 South Lake Avenue, 2nd Fl.
Pasadena, CA 91101
tel: 626.449.6787
fax: 626.449.6477

Education

El Camino Community College
Associates Degree

Registration and Affiliations

With Flewelling & Moody since
2003

Mrs. Lewis brings more than 30 years of experience in the architectural field to her projects. One of our most capable closeout experts, Luana has extensive experience supporting construction administration with attention toward the final DSA certification of a project.

Selected Project Experience - Flewelling & Moody

<u>William S. Hart Union High School District, Newhall, CA</u> <ul style="list-style-type: none">New Construction and Modernization	2007 - Present
<u>El Camino Community College District, Torrance, CA</u> <ul style="list-style-type: none">Modernization	2007 - Present
<u>Wiseburn School District, Hawthorne, CA</u> <ul style="list-style-type: none">New Construction and Modernization	2006 - Present
<u>Palm Springs Unified School District, Palm Springs, CA</u> <ul style="list-style-type: none">New Construction and Modernization	2006 - Present
<u>North Orange County Community College District, Anaheim, CA</u> <ul style="list-style-type: none">New Construction	2005 - Present
<u>Whittier Union High School District, Whittier, CA</u> <ul style="list-style-type: none">New Construction and Modernization	2005 - Present
<u>Oxnard Union High School District, Oxnard, CA</u> <ul style="list-style-type: none">Modernization	2004 - Present

Glen Pace, P.E.
Penfield & Smith
CIVIL

111 East Victoria Street
Santa Barbara, CA 93101
tel: 805.963.9532
fax: 805.966.9801

Education

1996 Brigham Young University
Provo, Utah
Bachelor of Science,
Civil Engineering -

Registration and Affiliations

Civil Engineer
License CA #61468

American Society of Civil Engineers

Mr. Pace joined Penfield & Smith in January 1997 and has participated in the design of various engineering projects in Ventura, Santa Barbara, and Los Angeles Counties. His public and private development experience includes work on 10 different K-12 campuses and half a dozen higher education campuses; requiring a deep understanding of DSA design guidelines and local agency policies and procedures.

Working with architects, public agencies & private developers has provided Glen with a wide range of experience: grading design, street improvements, parking facilities, flood analysis, sewer, water and drainage system improvements. Glen also has experience in working through complicated environmental requirements and political issues.

Select Project Experience

Lancaster School District, Lancaster, CA

- Lancaster Elementary School No. 24
- Lancaster Elementary School No. 25

Thacher School, Ojai, CA

- Arts & Commons Buildings

Oxnard School District, Oxnard, CA

- Thurgood Marshall Elementary School
- Elm Street Elementary School Relocatables
- Haydock Jr High School
- Juan Soria Elementary School

Westlake High School Pool and Tennis Courts, Westlake

Conejo Valley School District, Thousand Oaks, CA

- Gymnasiums at Four Middle Schools

Ojai Unified School District

- San Antonio Elementary School
- Topa Topa Elementary School

Learning Resource Center, Oxnard College

Moorpark Exotic Animal Training Center, Moorpark College

North Hall Faculty Office Building and Classrooms, CSU, Channel Islands

**Loyd Speers, S.E. -
Grossman & Speers Associates
STRUCTURAL ENGINEERING**

529 Hahn Avenue, Suite 200
Glendale, CA 91203
tel. 818.507.1020
fax. 818.507.1556

Grossman & Speer Associates specializes in the analysis and design of buildings and other complex structures. Established in 1979, the continuing dedication of their experienced personnel to provide quality workmanship and the insistence by the principals to furnish a personal service has given them the ability to be as innovative as their clients are. They attribute their success to good client relationships, efficient designs, excellent communication and extensive DSA experience.

Registration and Affiliations

License #2396

Select Project Experience

Whittier Union High School District, Whittier, CA

- Santa Fe Springs High School New Science Building
- Pioneer High School Stadium
- Cal High Library & Classroom Building

Palm Springs Unified School District, Palm Springs, CA

- Nellie Coffman Middle School Modernization

Los Angeles Unified School District, Los Angeles, CA

- South Los Angeles High School #3 / New Campus
New Campus, including two 4-story classroom buildings, locker rooms, elevated parking structure, theater/multi-use building, etc.

Newport Coast, CA

- The Studio at Sage Hill High School / New Theater Arts Building
New 271-seat black box theater and performing arts classroom.
Included scene shop, tension grid and follow-spot booth.

Burbank Unified School District, Burbank, CA

- John Burroughs High School / New Stadium
New bleachers, press box, elevator, concession and restrooms.

Antelope Valley Union High School District, Lancaster, CA

- Antelope Valley High School / Stadium Renovation
Stadium renovation, new bleachers, press box, concession & restrooms.
- Palmdale High School / New Special Education Building
New wood framed classroom building.
- Antelope Valley High School / New Special Education Building
New wood framed classroom building.

Kevin S. Chen, P.E., LEED AP
d'Autremont-Helms & Associates, Inc.
MECHANICAL / PLUMBING ENGINEERING

150 South Arroyo Pkwy., Suite 100
Pasadena, CA 91105
tel: 626.445.8580

Founded in 1949, d'Autremont-Helms & Associates, Inc. (dHA) has been serving the Western United States for more than 55 years. dHA performs complete mechanical, plumbing, and fire protection engineering services for public and private agencies.

Daily design activities are personally directed by a principal-level professional. The efforts of each principal are complemented by experienced project engineers and technical support personnel in a well-integrated team effort. dHA takes great pride in the government agency relationships we have established over the years, which allow us to better represent our clients and successfully see their projects through to completion.

Registration and Affiliations

License #M31154

Energy conservation is the cornerstone of all our engineering activity. Through rigorous studies, system solutions are selected for a particular clients needs and life-cycle cost basis. The result is the best system with the lowest combined owning, operating, and maintenance cost over the design life of the facility.

ASHRAE
NFPA
ASME

Select Project Experience

College of the Canyons, Santa Clarita, CA

- University Center - New Construction-

Santa Barbara City College High Tech Bldg., Santa Barbara, CA

- LEED Silver Certification (Under review)

East LA College Health Sciences Career Center, Los Angeles, CA

- LEED Silver Certification (Under review)

William Hart High School

- New band room addition, Choral room modernization
- Industrial Arts buildings D, P, Q modernization

Danny Ho, P.E.
Pacific Engineers Group
ELECTRICAL ENGINEERING

11028 Victory Blvd., Suite 201
North Hollywood, CA 91606
tel: 818.763.9189
fax: 818

Formerly known as S. Berke & Associates, it has provided diverse engineering consulting since the 1960's. Mr. Ho entered the consulting electrical engineering field in 1968 and became a Principal of Pacific Engineers Group when the corporation was founded in 1978. As Chief Electrical Engineer of the firm, he serves as the designer, planner, and manager of all projects.

Under his direction, the firm has become well-known for producing quality electrical engineering design on time and within budget. His keen understanding of DSA requirements in all his past collaboration with Flewelling & Moody is a major asset in producing quality and successful projects.

Education

1972 California State University,
Los Angeles, CA
Bachelor of Science

1974 California State University,
Los Angeles, CA
Master of Science

Registration and Affiliations

License #E 9130

Association of Consulting Electrical
Engineers, Past President.

Select Project Experience

Whittier Union High School District, Whittier, CA

- Pioneer High School
- California High School
- Santa Fe High School

Oxnard Union High School District

- Channel Island High School Auto Technology CTE

Palm Springs Union High School District

- Cabot Yerxa Middle School Administration Bldg. Addition & Campus Modernization
- Corsini Elementary School Modernization

William S. Hart Union High School District

- Hart High School, Phase 1 - Modernization of 7 Buildings, New Science Building and Band Room Addition
- Hart High School, Phase 2 - Modernization of Multi-Purpose Dining Facilities, Fine Arts Building, Practical Arts Building

El Rancho Unified School District

- El Rancho High School Practice Gym - New Construction

Ken Moeller, AIA, ASLA, CSI, LEED AP BD+C
Arch Pac, Inc.
AQUATICS CONSULTANT

1351 Distribution Way, Suite 1
Vista, CA 92081
tel: 760.634.1600
fax: 760.634.1611

Mr. Moeller has practiced architecture as a registered professional since 1980. He is also a registered Landscape Architect and Licensed Pool Contractor. His expertise in planning & design, project and team management and project leadership is evidenced by many successful and award winning projects. His particular expertise is in innovative design and coordination utilizing the latest computer technology and software. He leads and influences a skilled team of "hand picked" engineers. His construction and accounting / business background make him aware of construction means and methods and their cost implications.

Education

- 1994 National University
San Diego, CA
Masters in Business
Administration
- 1981 Arizona State University
Tempe, Arizona
Professional Degree,
Architecture
- 1978 Arixon State University
Tempe, Arizona
Bachelor of Science,
Accountancy
- 1975 Mesa College
Mesa, Arizona
Construction Technology

Mr. Moeller's work as a life guard and experiences as a competitive swimmer in his youth have developed keen awareness of safety issues and programming as they relate to facility design and how various programs impact an user-friendly-aquatic complex. Mr. Moeller has successfully designed hundreds of pools and aquatic complexes worldwide is fluent in Spanish.

Select Project Experience

Newport Costa Mesa Unified School District

- Corona Del Mar High School Pool - \$1.2 Million
- Newport High School Pool - \$1.2 Million

Presentation High School Pool, San Jose CA - \$3 Million

Desert Sands Unified High School District

- Desert Sand High School No. 4 Pool, Desert Sands, CA - \$1.5 Million
- Palm Desert High School Pool, Palm Desert, CA - \$1.5 Million
- Indio High School, Indio Pool, CA - \$1.5 Million

Winters Joint Unified School District

- Winters High School Pool, Winters, CA - \$1 Million

Registration and Affiliations

Registered Architect
License # C15022

Banning Unified School District

- Banning High School Pool with Athletic Fields, Banning, CA - \$10 Million

Santa Cruz City School District

- Santa Cruz High School Pool, Santa Cruz, CA - \$2.5 Million

Mark Beall
Mark Beall & Associates
LANDSCAPE ARCHITECT & IRRIGATION

7033 West Sunset Boulevard,
Suite 216
Los Angeles, CA 90028
tel: 323.465.1450

This full service Landscape Architecture practice's projects reflect the synergy between the site, the client, and the designer. The distinctive environmental qualities of each site are analyzed and engaged to both inspire and enrich. How the site will be used is the human element contributed by the client. As the design professional, we balance the need to create with the constraints and opportunities provided by the site and client. We pride ourselves in the integration of the client's needs, creative inspiration from the site and the collaborative efforts of the design team to develop unique and functional spaces.

Education

1984 Towson State University
Baltimore, MD
Bachelor of Science
Business Administration

Mr. Beall is an award-winning designer, horticulturalist, avid gardener and has been a licensed Landscape Architect with the State of California for many years. Under his leadership the firm pushes the boundaries of design into the realm of the unexpected and extraordinary. His previous experience on complex school sites, his passion for the environment and the extraordinary variability of plant forms and textures all serve as tools at his disposal.

Registration and Affiliations

Landscape Architect
License #3640

American Society of Landscape
Architects

Southern California Horticulture
Society

Select Project Experience

Fullerton Community College, Fullerton, CA

- Campus Commons

Whittier Union School District, Whittier, CA

- California High School Quadrangle Renovation

Palm Springs Union High School District

- Cabot Yerxa Middle School Administration Bldg. Addition & Campus Modernization

Painted Turtle Camp, Lake Hughes, CA

- Landscape Master Plan

Silverlake Masterplan, Silverlake, CA



Trusted Resource




"...seamless with respect to their availability, meeting project deadlines, resources to high trained staff of architects and engineers... a reliable liason between the contractor and our District."

Stephen McFarland
Oxnard Union High School District



Commitment



"I have sincerely appreciated you and the time you spent....
Willard was very fortunate to have had such an outstanding
architectural firm working with us...."

Kathy J. Onoye
Pasadena Unified School District

Litigation History

Flewelling & Moody has had one litigation case in the last 5 years which has been resolved by all parties. In addition the District provided a letter acknowledging that Flewelling & Moody has been deemed to have completed all project deliverables as per the agreement in its entirety.

The complaint was due to disputes between several parties caused by the default of the general contractor for non-performance and a construction manager that failed to provide oversight on behalf of the client. Flewelling & Moody got dragged in by association with the client. The case has been resolved and settled.

Flewelling & Moody, now in its 83rd year of continued service to our clients, has never filed a petition for bankruptcy and has weathered the current recession by adding clients during this period as well as being new awarded projects by many of our existing clients.



"At no time did he ever impose his vision on us. Rather, he skillfully led us to shape our 'dream' into a realistic reality - one that would ultimately meet our needs while falling within the always present budget constraints of publicly funded facilities."

LynnMcCormack
Mira Costa High School

PROVIDENCE HIGH SCHOOL

Within Budget



Giving Back

Flewelling & Moody believes in the next generation! As a responsible community member, we believe in giving back to the communities that allow us to partner with them. Nurturing future leaders and achievers is why we specialize in school design and construction, why we are committed to improving learning environments and supporting the educational process.



Each year, Flewelling & Moody employees volunteer to mentor, to assist and to guide students. We have participated in middle and high schools career days, read aloud to elementary school children during Dr. Seuss's Read Across America events, created student design competitions for middle school students and we have funded scholarships as students pursue higher education.

We are looking forward to partnering with the Arcadia Unified School District and engaging with and supporting the communities it serves!

